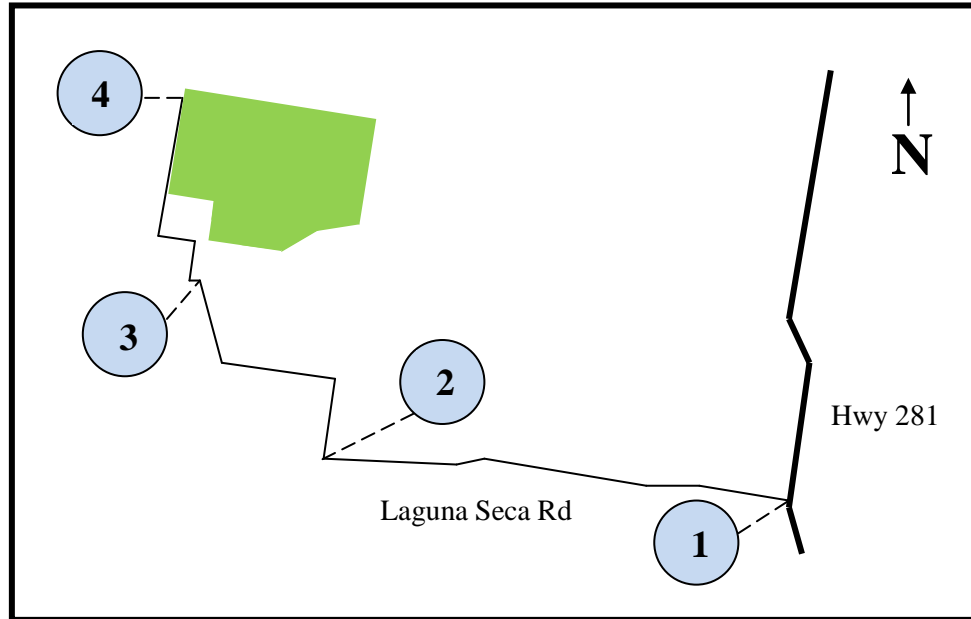


# Laguna Seca Ranch

Directions to the Ranch from Highway 281



1



Traveling north on Highway 281, exit on Laguna Seca Rd (turn left). This exit is 1.8 miles past the exit for Highway 490.

2



After traveling for 2.8 miles, you will come to a dead-end. Turn right at the stop sign.

3



After traveling for 1.3 miles, you will come to another dead-end. (The Laguna Seca Ranch historical marker is at your 2 o'clock.) Turn right at the stop sign. Follow this road which jogs to the left and again to the right.

4



After traveling for 1.9 miles, you have arrived at the ranch entrance (shown above). The gate is the only gate on your right (East) side. If you see a sign for the Buenos Aires ranch, you have gone too far.